

# Product Sheet

## Membrane Bound H\_IL21 K562 Cell Line

Catalog number: GM-C15709

Version 3.3.1.250115

<b>Description</b>	Membrane Bound H_IL21 K562 Cell Line is a clonal stable K562 cell line that constitutively expresses the human IL21 gene, constructed using lentiviral technology.
<b>Quantity</b>	5E6 Cells per vial, 1 mL
<b>Product Format</b>	1 vial of frozen cells
<b>Shipping</b>	Shipped on dry ice
<b>Storage Conditions</b>	Liquid nitrogen immediately upon receipt
<b>Target</b>	Human_IL21
<b>Gene ID/Uniprot ID</b>	Q9HBE4(AA His 25 - Ser 162)
<b>Host Cell</b>	K562
<b>Recovery Medium</b>	IMDM+10% FBS+1% P.S
<b>Growth medium</b>	IMDM+10% FBS+1% P.S+1 µg/mL Puromycin
<b>Note</b>	None
<b>Freezing Medium</b>	90% FBS+10% DMSO
<b>Growth properties</b>	Suspension
<b>Growth Conditions</b>	37°C, 5% CO <sub>2</sub>
<b>Mycoplasma Testing</b>	The cell line has been screened to confirm the absence of Mycoplasma species.
<b>Safety considerations</b>	Biosafety Level 2
<b>Note</b>	It is recommended to expand the cell culture and store a minimum of 10 vials at an early passage for potential future use.

## Materials

Reagent	Manufacturer/Catalogue No.
IMDM	GIBCO/12440-053
Fetal Bovine Serum	Cegrogen biotech/A0500-3010
Pen/Strep	Thermo/15140-122
Puromycin	Genomeditech/GM-040401
APC anti-human IL-21 Antibody	Biolegend/513007

## Figures

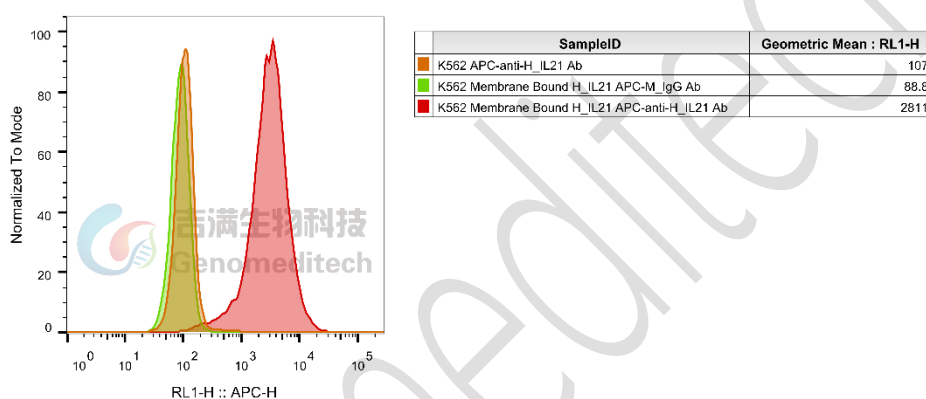


Figure 1 | Membrane Bound H\_IL21 K562 Cell Line(Cat. GM-C15709) was determined by flow cytometry using APC anti-human IL-21 Antibody (BioLegend/513007).

## Cell Recovery

Recovery Medium: IMDM+10% FBS+1% P.S

To insure the highest level of viability, thaw the vial and initiate the culture as soon as possible upon receipt. If upon arrival, continued storage of the frozen culture is necessary, it should be stored in liquid nitrogen vapor phase and not at -70°C. Storage at -70°C will result in loss of viability.

- Thaw the vial by gentle agitation in a 37°C water bath. To reduce the possibility of contamination, keep the O-ring and cap out of the water. Thawing should be rapid (approximately 2 - 3 minutes).
- Remove the vial from the water bath as soon as the contents are thawed, and decontaminate by dipping in or spraying with 70% ethanol. All of the operations from this point on should be carried out under strict aseptic conditions.
- Transfer the vial contents to a centrifuge tube containing 5.0 mL complete culture medium. And spin at approximately 176 x g for 5 minutes. Discard supernatant.

- d) Resuspend cell pellet with the recommended complete medium. And dispense the suspension into 1 - 2 T-25 culture flasks.
- e) Incubate the culture at 37°C in a suitable incubator. A 5% CO<sub>2</sub> in air atmosphere is recommended if using the medium described on this product sheet.

## Cell Freezing

Freezing Medium: 90% FBS+10% DMSO

- a) Centrifuge at 176 x g for 3 minutes to collect cells.
- b) Resuspend the cells in pre-cooled freezing medium and adjust the cell density to 5E6 cells/mL.
- c) Aliquot 1 mL into each vial.
- d) Place the vial in a controlled-rate freezing container and store at -80°C for at least 1 day, then transfer to liquid nitrogen as soon as possible.

## Cell passage

Growth medium: IMDM+10% FBS+1% P.S+1 µg/mL Puromycin

Approximately 48 - 72 hours after the initial thawing, the cells can be passaged for the first time. After this initial passage, the culture medium can be adjusted to growth medium supplemented with antibiotics. If cells are not passaged within 48 hours, it is recommended to add some fresh recovery medium and place the flask horizontally.

- a) When the cell density reaches 1 - 1.2E6 cells/mL, subculture the cells. Do not allow the cell density to exceed 1.5E6 cells/mL.
- b) It is recommended to use T-25 flasks for subculturing.
- c) These cells are suspension cells, and it is recommended to use the "half-medium change" method to maintain optimal cell conditions during passaging.
- d) During passaging, you can directly add fresh growth medium to the culture flask, gently pipette to resuspend the cells, and then transfer the cell suspension to a new T-25 flask for continued culture.

**Subcultivation Ratio: Maintain cultures at a cell concentration between 3E5 and 1E6 viable cells/mL.**

**Medium Renewal: Every 2 to 3 days**

## Notes

- a) These cells are sensitive to density, so please ensure that the cell density is maintained within an appropriate range during culture and subculturing.
- b) During the first passage, pay attention to the nutrient supply; if not subculturing, make sure to add fresh recovery medium every other day as needed.

## Sequence

IL21 Q9HBE4 (△SP)

HKSSSQGQDRHMIRMRLIDIVDQLKNYVNDLVPEFLPAPEDVETNCEWSAFSCFQKAQLKSANTGNNERII  
NVSIIKLLKRKPPSTNAGRQKHRLTCPSCDSYEKKPPKEFLERFKSLLQKMIHQHLSRTHGSEDS

## Related Products

IL-21	
<a href="#">H_IL-21 Reporter Cell Line</a>	

## Limited Use License Agreement

Genomeditech (Shanghai) Co., Ltd grants to the Licensee all intellectual property rights, exclusive, non-transferable, and non-sublicensable rights of the Licensed Materials; Genomeditech (Shanghai) Co., Ltd will retain ownership of the Licensed Materials, cell line history packages, progeny, and the Licensed Materials including modified materials.

Between Genomeditech (Shanghai) Co., Ltd, and Licensee, Licensee is not permitted to modify cell lines in any way. The Licensee shall not share, distribute, sell, sublicense, or otherwise provide the Licensed Materials, or progenitors to third parties such as laboratories, departments, research institutions, hospitals, universities, or biotechnology companies for use other than for the purpose of outsourcing the Licensee's research.

Please refer to the Genomeditech Cell Line License Agreement for details.

Genomeditech